

DOMINANT SCALE WORKOUTS

C₇

①

C₇

3

C₇

5

C₇

②

C₇

11

C₇

③

C₇

18

C₇

④



DOMINANT SCALE WORKOUTS

2
25 C₇



C₇

5



F₇



F₇



F₇



F₇



F₇



F₇





DOMINANT SCALE WORKOUTS

4 B \flat 7
73



B \flat 7
76



B \flat 7
80



B \flat 7
84



B \flat 7
87



B \flat 7
91



7 E \flat 7



E \flat 7
96



DOMINANT SCALE WORKOUTS

5

[illegible]

101

104 E_b7

[illegible]

115 E \flat 7

Musical notation for measure 115, key of E \flat major, 7/4 time. The measure contains a half note E \flat , a half note G \flat , a half note A \flat , and a half note B \flat . The notes are beamed in pairs: (E \flat , G \flat) and (A \flat , B \flat).

[illegible][illegible]

DOMINANT SCALE WORKOUTS

6 G⁷

8



127 G⁷



129 G⁷



132 G⁷



135 G⁷



138 G⁷

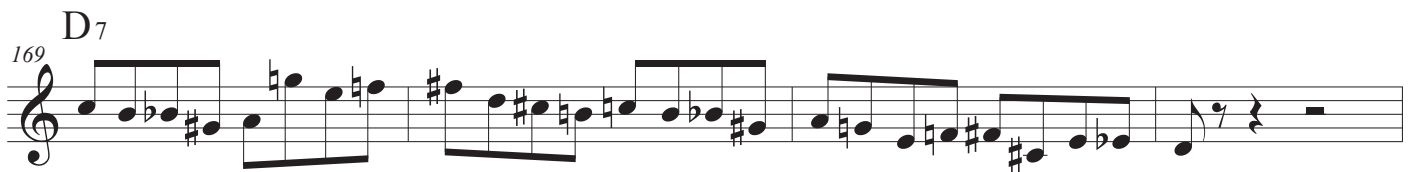
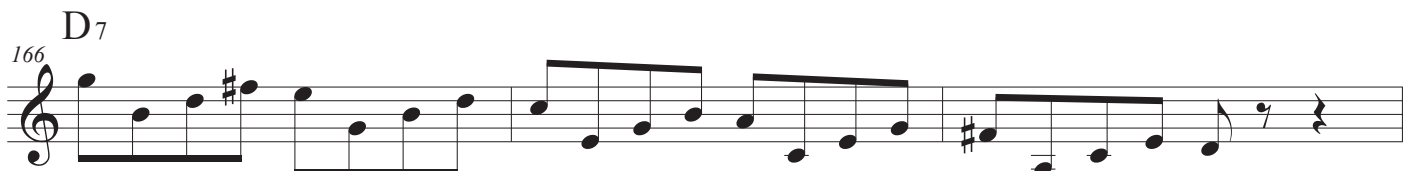
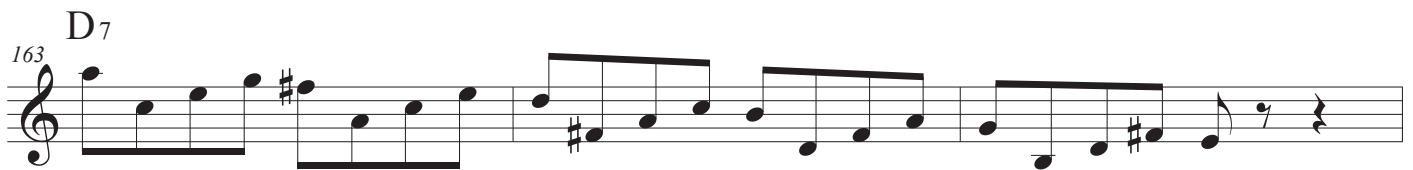
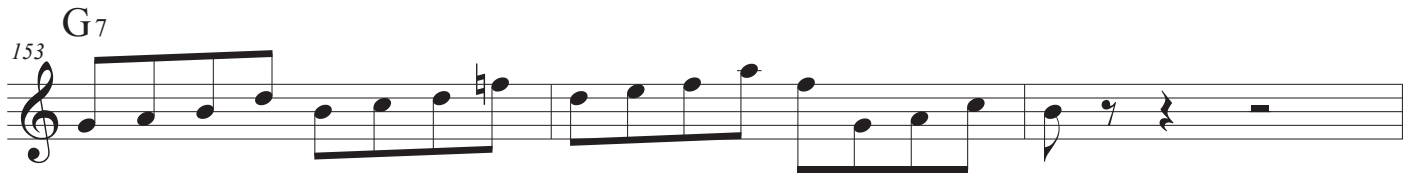
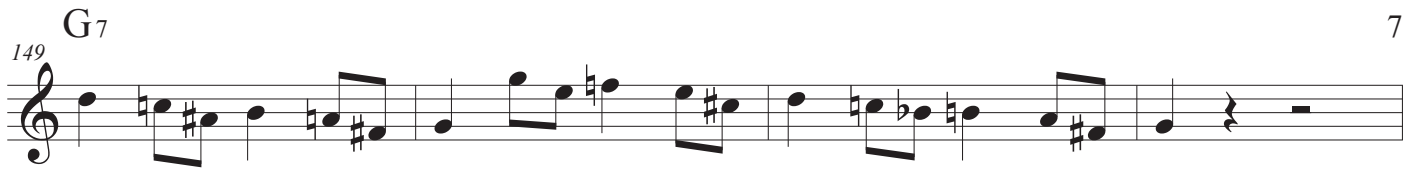


142 G⁷



146 G⁷





DOMINANT SCALE WORKOUTS

8 D₇



177 D₇



180 D₇



184 D₇



10 A₇

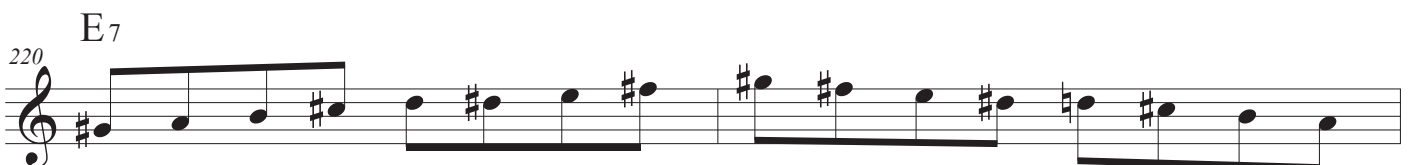
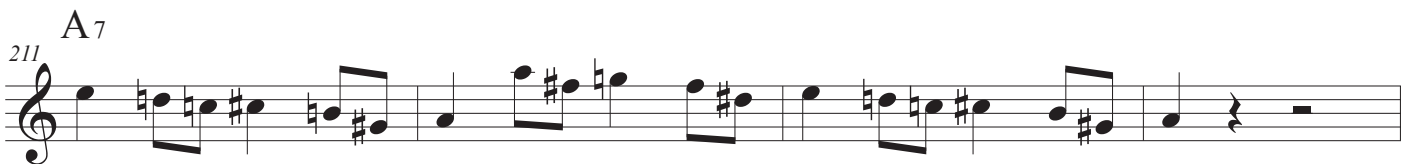


189 A₇



194 A₇





DOMINANT SCALE WORKOUTS

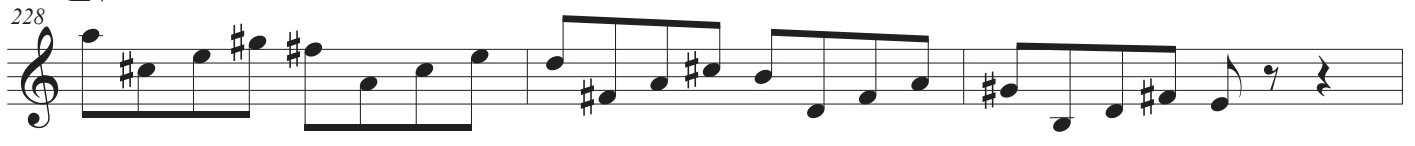
10 E₇
222



E₇
225



E₇
228



E₇
231



E₇
235



E₇
239




E₇
242



E₇
246



249 F C^{aug} F D₇ 11



It had to be you - #1

253 **G7**

253 **G7**

257 F C^{aug} F D₇



257 F C^{aug} F D₇

It had to be you - #2

261 **G7**

The image shows a single musical staff for measure 261. The key signature has one sharp (F#). The measure is marked with a '7' time signature and a 'G7' chord symbol. The notation consists of a series of eighth and sixteenth notes, some beamed together, and a final quarter rest. The notes include F#, G, A, B, C, D, E, and F, with various accidentals and stems.

265

F C^{aug} F D⁷

265 266 267 268

It had to be you - #3

[illegible]

It had to be you - #4

277 **G7**

Musical notation for measure 277, key of G major, 4/4 time. The measure contains a G7 chord and a melodic line starting on G4, moving up to A4, B4, and C5, then down to B4, A4, G4, and F#4.

DOMINANT SCALE WORKOUTS

12 G₇
281



Sweet Georgia Brown #1

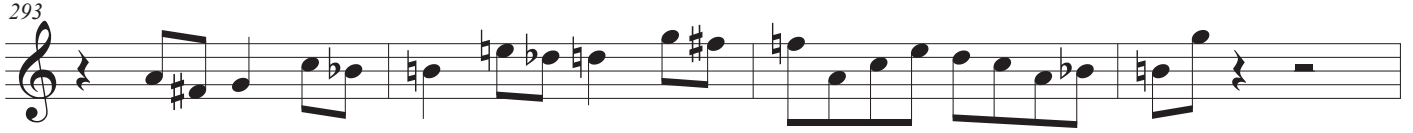
285 C₇



289 F₇



293 G₇



Sweet Georgia Brown #2

297 C₇



301 F₇



305 G₇



Sweet Georgia Brown #3

309 C₇

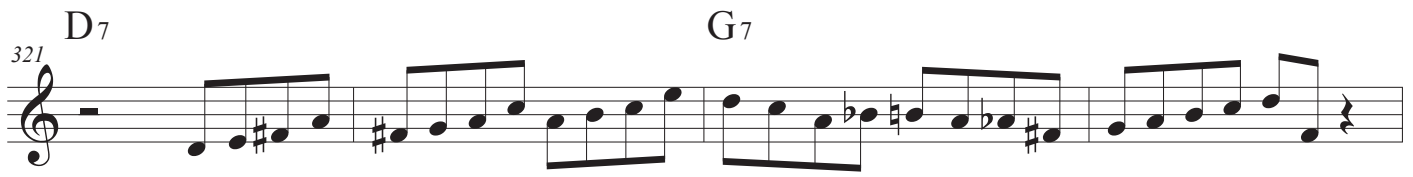


313 F₇





I've got rhythm middle 8 #1



I've got rhythm middle 8 #2



I've got rhythm middle 8 #3



I've got rhythm middle 8 #4

